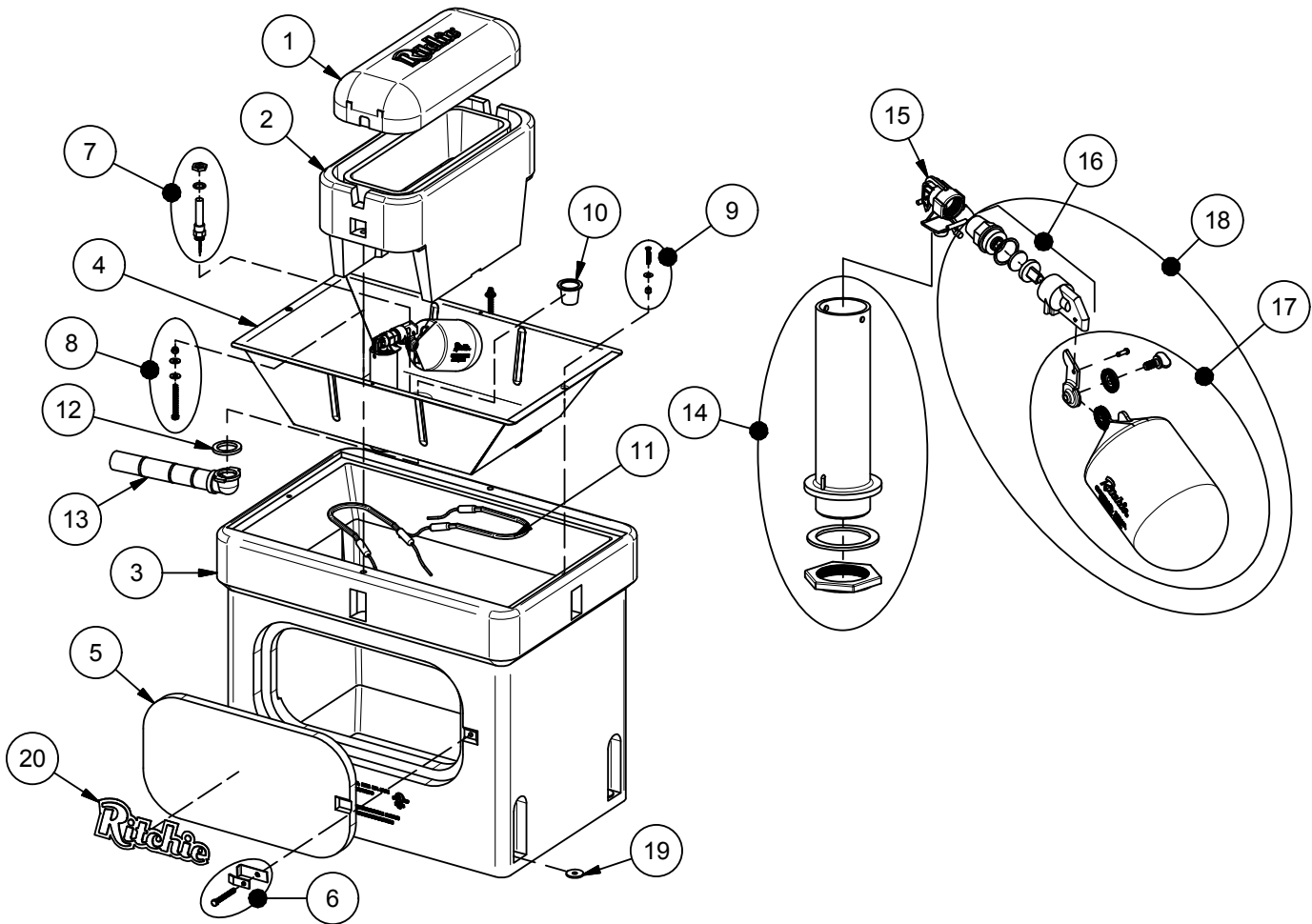


OmniFount 3

Part # 18270



| Item | Part # | Description | Qty | Item | Part # | Description | Qty |
|------|--------|-------------------------------|-------|------|--------|------------------------------|-------|
| 1 | 18418 | Omni 3 Cover | 1 | 15 | 11514 | Valve Bracket 3/4" pkg | 1 pkg |
| 2 | 18345 | Omni 3 Frame pkg | 1 pkg | 16 | 15377 | Green Male Valve 3/4" pkg | 1 pkg |
| | 18346 | Omni 3 Cover & Frame pkg | 1 pkg | 17 | 18314 | Float with Hardware pkg | 1 pkg |
| 3 | 18272 | Omni 3 Casing | 1 | | 18313 | Hardware for Float pkg | 1 pkg |
| 4 | 18342 | Omni 3 Trough | 1 pkg | 18 | 16993 | Green Valve & Float pkg | 1 pkg |
| 5 | 16562 | Access Panel 10"x20" | 1 | 19 | 18318 | Bolt Down Washer (4/pkg) | 2 pkg |
| 6 | 18147 | Access Panel Hardware pkg | 1 pkg | 20 | 18653 | Ritchie Decal 12" (1/pkg) | 1 pkg |
| 7 | 16534 | Fenwal Thermostat SS pkg | 1 pkg | NS | 12583 | Valve Supply Line pkg | 1 pkg |
| | 18320 | O-Ring Fenwal (6/pkg) | 1 pkg | NS | 13830 | Cable Htr 120V 48W (1/pkg) | 1 pkg |
| | 18074 | Nut Brass Fenwal (6/pkg) | 1 pkg | NS | 16554 | Omni 3 Accessory pkg | 1 pkg |
| 8 | 18319 | Frame Bolt & Wshr SS(2/pkg) | 1 pkg | NS | 16523 | Seal Foam 1/4"x3/4"x25' Roll | 1 |
| 9 | 18095 | Trough Screw & Nut SS (2/pkg) | 1 pkg | NS | 14866 | Seal Foam 1/2"x3/4"x10' Roll | 1 |
| 10 | 18628 | Drain Plug (2/pkg) | 1 pkg | | | | |
| 11 | 11419 | Heater 120V 250W (1/pkg) | 2 pkg | | 18273 | OMNI 3 240V | |
| 12 | 18075 | Drain Washer (6/pkg) | 1 pkg | NS | 11403 | Heater 240V 300W (1/pkg) | 2 pkg |
| 13 | 11472 | Drain Pipe with Elbow | 1 | NS | 16424 | Cable Htr 240V 48W (1/pkg) | 1 pkg |
| 14 | 16629 | Standpipe pkg | 1 pkg | | | | |